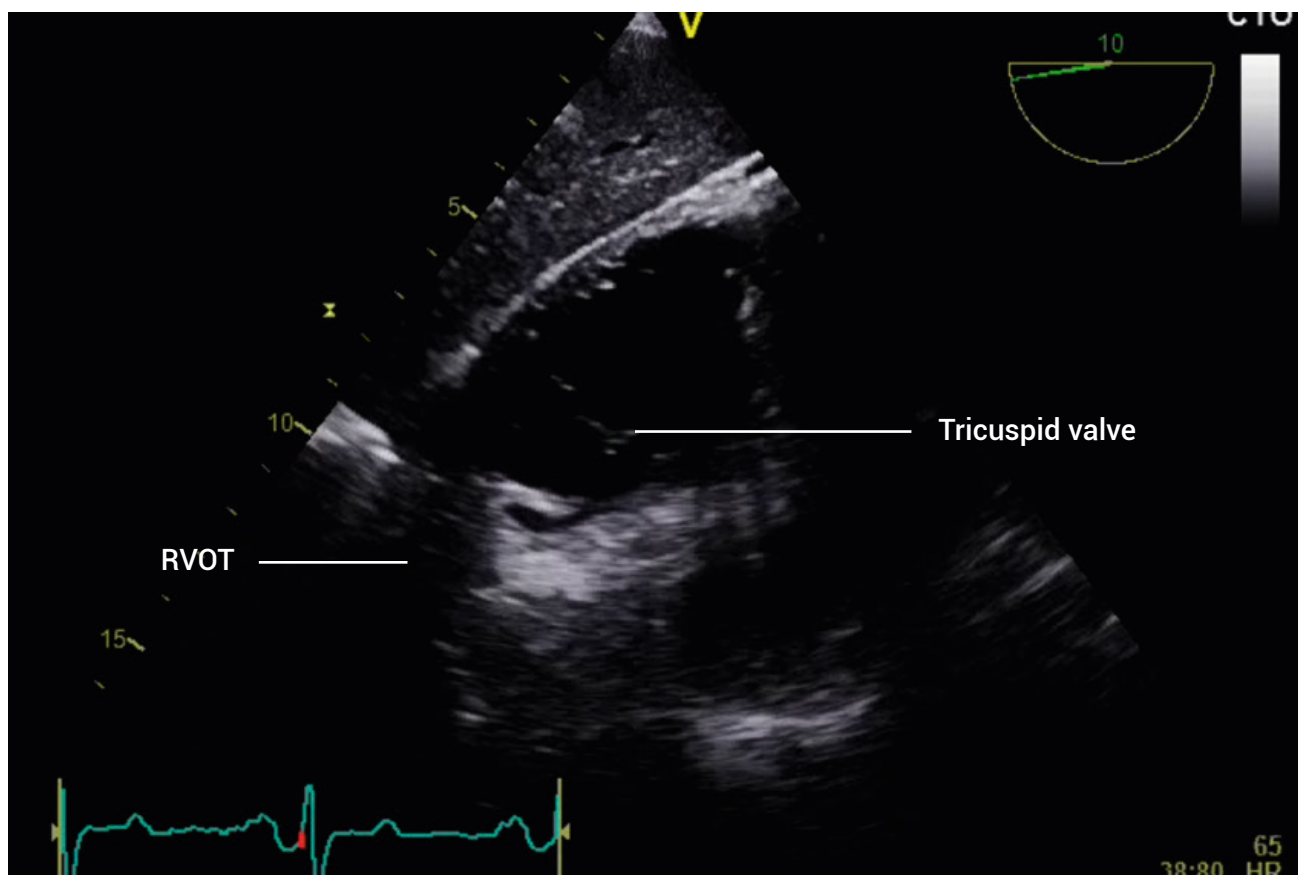


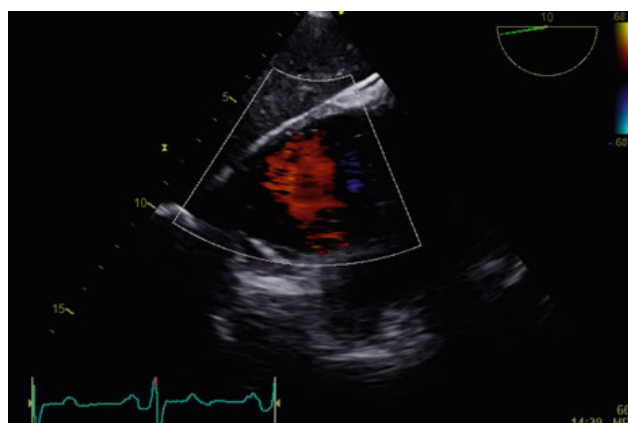
TEE ESSENTIALS

Assessment of the right heart: Transgastric right ventricular short-axis view

The transgastric right ventricular short-axis view is obtained at the transgastric level, using a transducer imaging plane angle of 0–20°. To locate the view, start with a transgastric left ventricular short-axis view. Then, turn the probe to the patient's right to bring the right heart into view. The basal right ventricle and tricuspid valve are seen in short-axis in the near field, and the right ventricular outflow tract (RVOT) is visible in the far field.



Assess tricuspid valve flow with color Doppler.



Further reading

Rudski LG, Lai WW, Afilalo J, et al. 2010. Guidelines for the echocardiographic assessment of the right heart in adults: a report from the American Society of Echocardiography. *J Am Soc Echocardiogr*. 23: 685–713.